



**ORDER OF SERVICE**  
**24 MARCH 2024**

---

**40 years since St Andrew's on The Terrace  
declared itself a Nuclear Weapon Free Church.**

**PALM SUNDAY**

## WELCOME TO ST ANDREW'S ON THE TERRACE

Wherever you are on your faith journey, wherever you have come from and wherever you are going to, whatever you believe, whatever you do not believe, you are welcome here.

We recognise that being inclusive is an ongoing journey and we are continuing to learn. We are committed to challenging discrimination within the church and wider society.

Please join in the congregational responses printed in ***bold italics***.

Please stand if you are able, for the hymns and the offering prayer.

We usually sing the hymns without announcement.

*Please note your nearest fire exit. The church and hall have been earthquake strengthened.*

*In an earthquake: drop, cover and hold.*

**Today's service is led by Rev Dr Fei Taule'ale'ausumai**

### PRELUDE

**Kyrie, Lord have mercy upon us**

by Johann Sebastian Bach (1685 – 1750)

### GATHERING

In Lent the sacred story changes lives:  
our complacency is shattered;  
we are challenged uncomfortably.

For only this way  
is compassion known and peace experienced.

***Let us celebrate life in the Presence we name God.***

### OPENING RESPONSES

God in Jesus,

***You travel with us to the hard places in our lives.***

You know whatever depth of pain is within us.

***You know our fragility better than we do ourselves.***

You know any anger we hold, which sometimes escapes in violence.

***You know our fears of doing the hard work of freeing ourselves  
from old wounds that cause us and others ongoing pain.***

You know whatever grief lies buried deep within,  
awaiting release on our way to the fullness of life you promise.

***These are the stumbling blocks within ourselves.***

Help us see clearly and compassionately who and how we are.

***Help us accept and love ourselves as you accept and love us,  
so that we in turn are more able to love others.***

## PROCESSIONAL HYMN

## WOV 257(i) 'My song is love unknown'

Words: Samuel Crossman (adapted) Music: John Ireland

Tune: LOVE UNKNOWN

1. My song is love unknown,  
My Saviour's love for me,  
love to the loveless shown,  
that they might lovely be.  
O who am that for my sake  
My God should take frail flesh, and die?
2. Sometimes they strew his way  
and his sweet praises sing,  
resounding all the day  
hosannas to their King.  
Then "Crucify!" is all their breath  
and for his death they thirst and cry.
3. Why, what has Jesus done?  
What makes this rage and spite?  
He made the lame to run,  
he gave the blind their sight.  
Sweet injuries! Yet they at these  
themselves displease and 'gainst him rise.

## WELCOME

E te whānau a Te Karaiti,  
ngā mihi aroha ki a tātou katoa.

***Kia ora tātou.***

Ou te faatalofa atu i le Suafoa o Iesu Keriso

***Talofa lava, we too greet you in the name of Jesus Christ***

*A special welcome to those who are visiting us. Please join us for morning tea in the hall after church.*

## OPENING PRAYER

Loving God,  
through Jesus you have given us your Light  
so it might radiate through us

***As the revelation of your life-giving power and your offer of transformation.***

Help us be mindful of our power to embody life-giving love,  
not blinded by our struggles to our worth and responsibility.

***Free us from whatever clouds our transparency  
and shades your light and power from others.***

## JESUS' PRAYER

© Rev Sherri Weinberg

***God - heart of the world:  
revealed through every aspect of creation:  
understood through our awareness.***

***May we honour the holiness of creation and act accordingly  
so that your love is reflected in the way we live.***

***May we always be thankful for the food we eat  
and the friends we have.***

***May we forgive those who transgress against us  
and be forgiven for our wrong doings.***

***In the freedom of love may we live as your heartbeat  
and not be compromised by hesitation.***

***Through our freedom, may your justice  
be seen and heard and experienced  
forever and ever.***

***Amen.***

## LIGHTING THE RAINBOW CANDLE

We light the rainbow candle as a sign of our inclusivity and for our children.

## FAMILY TIME

Mike Wespel-Rose

## PASSING THE PEACE

*Our practice is to pass the peace with or without shaking hands, and say "peace be with you"*

## THE WORD IN TEXTS

Rosemary Lawrence

Hebrew Bible

Isaiah 2:3-5

New Testament

Matthew 5:3-12

### Contemporary Reading

A Prayer for Palm Sunday

by William Loader

We open our hearts.

We open our lives. Come into us.

Ride on in with your gentleness.

Visit our public spaces where everyone knows us.

Visit our private spaces where we hardly know ourselves.

Come with your wonderful forgiveness.

Come with your creative Spirit to help us begin again.

Come with your Spirit the comforter and bind our wounds.

Come with the cry for action, to move on, to take risks, to stand up for justice,  
to promote peace and understanding.

Come into our crowded streets, our crowded lives.

Come into our lonely places where we feel abandoned.

Come in our daytime come in our night time.

Come even when we cry crucify and kill off love;

Come with your cross, your compassion, that we may also know resurrection  
and new life.

Come, to us today. Amen.

### RESPONSE

For the Word in scripture,

for the Word among us,

for the Word within us,

***we give thanks.***

## HYMN

## CH4 370 'Ride on ride on, the time is right'

Words: John L Bell (b. 1949) & Graham Maule (b. 1958)

Tune: RIDE ON

1. Ride on, ride on, the time is right:  
the roadside crowds scream with delight;  
palm branches mark the pilgrim way  
where beggars squat and children play.
2. Ride on, ride on, your critics wait,  
intrigue and rumour circulate;  
new lies abound in word and jest,  
and truth becomes a suspect guest.
3. Ride on, ride on, while well aware,  
that those who shout and wave and stare,  
are mortals whom with common breath,  
can crave for life and lust for death.
4. Ride on, ride on, God's love demands;  
justice and peace lie in your hands.  
Evil and angel voices rhyme  
this is the man and this the time.

## REFLECTION

*"Peace and Palms"*

Rev Dr Fei Taule'ale'ausumai

## REFLECTIVE MUSIC

**"Hosanna!" from Jesus Christ Superstar**

by Andrew Lloyd Webber

## HYMN

**WOV 561 'Kneels at the feet of his friends'**

Words: Tom Colvin (c. 1965) and people of Ghana; Music: Ghana Folk Melody

Kneels at the feet of his friends,  
silently washes their feet:  
master who acts as a slave to them.  
*Yesu, Yesu,*  
*fill us with your love,*  
*show us how to serve*  
*the neighbours we have from you.*

Loving puts us on our knees,  
serving as though we were slaves:  
this is the way we should live with you.  
*Yesu, Yesu,*  
*fill us with your love,*  
*show us how to serve*  
*the neighbours we have from you.*

**OFFERING MUSIC**      **Chorale Prelude on “Grant us peace in our time, O Lord”**  
by Helmut Bornefeld, composed in Germany in 1939

**OFFERING HYMN**

Words: Robert Murry (adapt)  
Tune: STUTTGART

Grant us God the grace of giving  
with a spirit large and free,  
that ourselves and all our living  
we may offer thankfully.

**OFFERING PRAYER**

***Compassionate God,***  
***who calls all people to be one family,***  
***teach us to share your gifts with each other,***  
***strengthen us to make peace by working together,***  
***and challenge us with a vision of the feast***  
***where all are welcome. Amen***

*We recognise and bless the gifts brought to the table, and those which wing  
their way electronically from our banks to the church’s account.*

**LIFE IN THE COMMUNITY OF ST ANDREW’S**

People share notices. If you have a notice, please move to the front row, ready to speak **briefly** from the lectern.

**For the benefit of newcomers, please introduce yourself before you begin.** Thank you.

**PRAYERS OF THE PEOPLE**

**Pat Booth**

## **CIRCLE OF PRAYER**

We think today of the people of Germany and the Council of Christian Churches in Germany. We hold all refugees in our hearts and pray in particular for those who are still detained in Australia. We give thanks for recent progress and pray that their calls for justice might yet be answered with compassion. In New Zealand, we remember those in Parliament, and today we name Darleen Tana (List) and Cushla Tangaere-Manuel (Ikaroa-Rāwhiti). Here in the Central Presbytery we pray for the leaders and people of St Margaret's Presbyterian Church, Silverstream.

## **PRAYER FOR ST ANDREW'S**

*Bless your people, God  
and renew our life in this place.  
Refresh us with a spirit of love and respect  
for all who follow the Jesus Way,  
for those whose pathways differ from our own,  
and for care of the Earth and its creatures.*

*Bless the cities in which we live,  
that they may be places  
where honest dealing,  
good government,  
the desire for beauty,  
and the care for others flourish.*

*Bless this church,  
that what we know of your will  
may become what we do,  
and what we believe,  
the strong impulse  
of our worship and work.  
Amen*



## **CLOSING HYMN**

## **AA8 'Brother, Sister, Let Me Serve You'**

Words and Music: Richard Gillard

Tune: SERVANT SONG

1. Brother, sister, let me serve you,  
let me be as Christ to you.  
Pray that I may have the grace  
to let you be my servant too.
2. We are pilgrims on a journey,  
we are travellers on the road.  
We are here to help each other  
walk the mile, and bear the load.
3. I will hold the Christ-light for you,  
in the night-time of your fear.  
I will hold my hand out to you,  
speak the peace you long to hear.
4. I will weep when you are weeping;  
when you laugh, I'll laugh with you.  
I will share your joy and sorrow,  
till we've seen this journey through.
5. Brother, sister, let me serve you;  
let me be as Christ to you;  
pray that I may have the grace to  
let you be my servant too.

## **BLESSING**

May we go out with courage  
drawing strength from the story of Jesus  
from our own God-depth  
and from each other,  
to face whatever we must  
in building Peace, Truth and Justice in our world.

## **SUNG AMEN**

**POSTLUDE**

**Chromatic Ricercare after the Creed**  
by Girolamo Frescobaldi (1583 – 1643)

**THANK YOU**

**Bruce Cash**  
our musician today

**ST ANDREW'S ON THE TERRACE WELCOMES ALL VISITORS**

Please sign the visitors' book at the back of the church.

We hope you enjoyed worshipping with us. At St Andrew's we want you to feel at home—to join in with the activities of our community of faith, or to come and find your own spiritual place in your own time. If you would like more information about St Andrew's or to explore becoming a member or associate member, please fill in one of the welcome leaflets (at the back of the church) and hand it to a minister or a welcoming team member.

---

**GENEROUS GIVING**

St Andrew's depends on the generous giving of members and friends. If you would like to make a donation or support our work through planned giving, please contact our Parish Office or Treasurer. Bank account for donations is: St Andrews on The Terrace, BNZ Lambton Qy, 02-0534-0004022-02

---

Unless otherwise stated all hymns are used by permission CCLI Licence 341550 or reprinted with permission under ONE LICENSE #. A-623996. All rights reserved.

Words/music to new hymns and gathering statement, prayers and affirmation are original unless acknowledged.

## ***ST ANDREW'S COMMUNITY NOTICES***

### **DCM FOOD BASKETS**

At the Congregational Conversation this month, we discussed the placement of the food baskets. It was decided we would try placing them up the front of the church, near the piano, so the full baskets don't have to be carried from the back at offering time.

### **CONTACT LIST**

Another suggestion from the Congregational Conversation was to have a booklet of contacts (telephone and/or e-mail) for parishioners. Understanding that some people might not want their contact details to be widely available, could anybody who wants to be included in such a booklet please contact the office with name and phone number (and/or e-mail address) by the end of March.

Sue Hirst, Parish Council Convenor

### **"EXPLORING FAITH"**

After our service on the 1<sup>st</sup> Sunday of the month we gather in one of the Conference Rooms to share "Exploring Faith. Our next meeting will be on Sunday 7 April. The 1<sup>st</sup> Sunday after Easter. Lots to think about and reflect on at that point in our Church Year. So, plan to join us after morning tea. Previously these sessions have been both absorbing, interesting and thought-provoking. Sometimes it is some of our members simply sharing their faith journey, what faith has meant to them and to the extent that it has changed during their lifetime. Also, we might pick a particular topic and agree to explore that and see to what extent we think the same, or quite differently about the same thing. If you are interested in sharing your faith story sometime in the future, please contact Barrie Keenan at [barrie@keenan.co.nz](mailto:barrie@keenan.co.nz) or 027 285 7275.

### **SUNDAY ROSTER: MORE HELP NEEDED**

Please contact Pam Fuller [pjfiller@gmail.com](mailto:pjfiller@gmail.com) if you are interested in helping with our Sunday services.

Duties include Welcoming, Sound, Laptop, Readings, Offering, Prayers and Morning tea.

## **ENVELOPE GIVING 2024-25**

For those who support our work at St Andrews on The Terrace through weekly envelope giving, the new sets of envelopes for the coming year April 2024 - 25 are now available. You can pick up your numbered envelopes from the northern vestry after church or contact Treasurer Paul Barber [pbarber289@gmail.com](mailto:pbarber289@gmail.com) to arrange to have them posted to you.

## **LLOYD'S WAKE**

Kia ora koutou e te whanau,

This is a warm invite to a wake for Lloyd Jobson at the congregational lunch following church gathering on Sunday 14th April.

It will be an informal, table fellowship way of remembering Lloyd.

There will be a stall display at the back of the hall of a sample of books from Lloyd's large collection of them. They reflect his longstanding love of learning and vision of education for self and societal empowerment, especially in the cause of social justice and change for betterment in society and the world.

His love of the arts is also reflected by his book collection. Further, his small collection of vinyl records and CDs tells a story of how music had always been his companion Muse.

In the spirit of table fellowship, please feel free to share a few words of how you remember Lloyd at his wake.

Nga mihi nui, Molly Seah

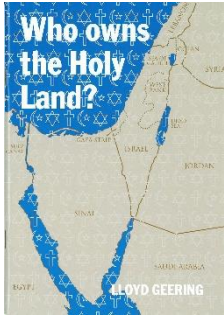
## **RELAY FOR LIFE 2024**

I'm participating in the Relay For Life 2024 on 23/24 March at Trentham and would love you to join me! Funds raised are for the Cancer Society. I would be very grateful if you are able to make a donation to Relay For Life 2024 online at:

<https://relayforlife.org.nz/sally-gray>

Thanks for all your support! Sally Gray

## WHO OWNS THE HOLY LAND?



With the current situation in Gaza, we have had numerous expressions of interest in the St Andrew's Trust publication of Professor Sir Lloyd Geering's 2001 lecture series *Who owns the Holy Land?* For those who do not have access to a print copy, it is reproduced here: <https://www.standrews.org.nz/archives/41423>

## CHURCH LIFE SURVEY

The results of the Church Life Survey are now available. We have an overview of the results from St Andrew's on the Terrace (29 responses), as well as comparisons with Central Presbytery, other PCANZ churches and all churches who responded. A few printed copies will be available at the back of the church, or you can ask the office for a copy to be e-mailed to you.

Sue Hirst, Parish Council Convenor

## RECYCLING OF HOUSEHOLD BATTERIES

Household batteries can be dropped off for FREE at Karori Library, Kilbirnie Library, Te Awe Library (Brandon St), Island Bay Community Centre, Newlands Community Centre, Tawa Community Centre, and the Southern Landfill Tip Shop.

## FINISHED A LOAF OF BREAD OR BOTTLE OF MILK?

Please save the bread bag and the clip (plastic only) and milk bottle tops. The bags are used at the Compassion Soup Kitchen for "takeaway" lunches and the tags and milk bottle tops get recycled. Please fold the bags and pack separately. There is a collection box on the North Vestry table. Thanks— Kath, Trish and Brian.

## SUPPORT FOR DCM (DOWNTOWN COMMUNITY MINISTRY)

We are grateful for the many services provided by the DCM since 1969 and one way we can offer our support is to FILL the food baskets at church each Sunday. Suggested items: Tinned – soup, fish, baked beans, stews and fruit / pasta and curry sauces / Jam, honey Marmite/Vegemite and peanut butter / porridge, biscuits and muesli bars / instant coffee and tea bags / soap, toilet paper, toothpaste and toothbrushes. (Please no fresh fruit/vegetables)  
For other ways to support the work of the DCM visit <https://www.dcm.org.nz>.

## UPCOMING WEDNESDAY LUNCHTIME CONCERTS



*Wednesday 27 March 12:15pm – 1:00pm*  
Amiki Trio - "Tales of Love and Enchantment"



*Wednesday 3 April 12:15pm – 1:00pm*  
Henry Meng, solo piano

## **WIDER CHURCH AND COMMUNITY NOTICES**

### **COMMON GRACE - GAZA CEASEFIRE PILGRIMAGE WELLINGTON**

This Lent alongside Aotearoa Christians for Peace in Palestine, Common Grace invites you to join us in a Gaza Ceasefire Pilgrimage. In over 85 cities around the world, Christians, alongside their Jewish and Muslim brothers and sisters, are walking the length of Gaza to prayerfully map Gaza onto our own cities with our bodies. Christian leaders in Palestine have called on the global Christian community to do this.

It is part prayer walk, part protest, part fundraiser. Groups will walk, cycle, or roll through their city, mapping either the 36km journey Gazans are being forced to take from Gaza City to Rafah to flee bombardment, or the 41km length of all of Gaza.

There are four core demands that the Gaza Ceasefire Pilgrimages are calling for:

- Enduring and sustained ceasefire.
- Immediate flow of life saving food, water, aid, fuel and humanitarian assistance.
- Release of all hostages – both the Israeli hostages held by Hamas – and the Palestinian hostages held in the Israeli prison system.
- End of occupation so a just-peace can begin.

Any funds raised will go to CWS's partner on the ground in Gaza, the Department of Service to Palestinian Refugees.

The Wellington event is on **Thursday 28 March 2024**. Starting at Taita Rock, Lower Hutt 5am and ending in Wellington city around 8pm. You can walk the full route or join for part of it along the way.

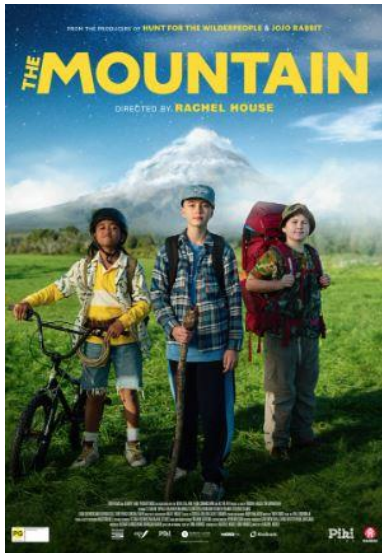
Our prayer is that this Lent, as we meditate on the life and passion of Jesus, we might deepen our solidarity with what our Palestinian sisters and brothers are experiencing daily.

More details and to register go to:

<https://www.commongrace.nz/gazapilgrimages>

Sonia Groes-Petrie

## MOVIE FUNDRAISER – ‘THE MOUNTAIN’



The Te Awakairangi Branch of the Green Party is holding a fundraising movie night on Thursday 4 April at the Light House Petone, 8pm for the movie at 8.30pm. The movie is The Mountain, a New Zealand made film directed by Rachel House. It's rated PG and lasts for 89 minutes. It is 'a heartfelt drama about three children on a mission to find healing under the watchful eye of Taranaki Maunga and discover friendship in the spirit of adventure.' Tickets are \$25. If you'd like tickets please contact Vivienne Mountier on 027 845 1434 or [vmountier@gmail.com](mailto:vmountier@gmail.com)

## RELIEFAID APPEAL FOR GAZA



### ReliefAid is on the ground delivering emergency aid to families

The situation in Gaza is catastrophic, the death toll rises daily and families have nowhere to flee. Compounding the distress, Gaza's closed borders have made humanitarian access all but impossible, leaving families lost, abandoned and without the basics needed to survive.

Despite these monumental challenges, ReliefAid is NOW delivering aid in Gaza.

As we have done in other conflicts, ReliefAid is bringing help where it is needed most. Leveraging our established networks on the ground, we have deployed a team within Gaza to deliver life-saving aid directly to families. **Donations can be made here: [www.reliefaid.org.nz/gaza-appeal/](http://www.reliefaid.org.nz/gaza-appeal/)**

Together we will make a difference. Thank you.

Mike Seawright, Founder and Chief Executive



## CHRISTIAN WORLD SERVICE GAZA PALESTINE EMERGENCY APPEAL



Christian World Service has launched an **emergency appeal** to assist people who have been affected by the current conflict in the Middle East, particularly Gaza.

“The people of Gaza are living in harrowing conditions with limited resources, and we cannot stand idly by while they suffer... Our collective efforts can make a significant difference in the lives of those trapped in this nightmarish situation,” DSPR.

Funds raised will meet some of the urgent needs of people through our long term partner the Department of Service to Palestinian Refugees (DSPR). In Gaza, DSPR is providing shelter, food and support to people who have fled the north and who have lost homes. DSPR is an integral part of the local community. It is preparing to help many more people as soon as it practically can with:

- Food
- hygiene kits
- shelter
- medications and medical treatment
- psychosocial support

### **Donations can be made through CWS:**

- **Online and by direct deposit to the Gaza Palestine Emergency Appeal**
- **By Phone with a credit card: 0800 74 73 72**
- **By Post to: CWS, PO Box 22652, Christchurch 8140**

*NB: CWS is a member of ACT Alliance a coalition of over 140 churches working together on humanitarian, development in over 120 countries.*

### **SUNDAY ROSTERS**

A folder with an outline of each duty is now kept on the back table. If you are unable to do your rostered duty please arrange a swap/substitute and inform the office. Thank you.

#### **Thanks to this week's volunteers**

Welcoming	Sandra and Tony Kirby
Sound	Sonia Groes-Petrie
Laptop	Cam Smart
Offering	Bridget Martin, Mike Wespel-Rose
Coffee/tea	Maxine and Jim Cunningham, David Douglas
Family Time	Mike Wespel-Rose
Readings	Rosemary Lawrence
Prayers of the People	Pat Booth
Rainbow Room	In recess
Library	Mike Wespel-Rose
Musician	Bruce Cash

#### **On duty Friday 29 March – Good Friday**

Welcoming	Lynette and Brian Burrell
Sound	Ben Gray
Laptop	Sandra Kirby
Offering	None
Coffee/tea	None
Family Time	None
Readings	Tony Kirby and others
Prayers of the People	None
Rainbow Room	In recess
Library	Closed
Musician	Peter Franklin

#### **On duty Friday 31 March – Easter Sunday**

Welcoming	Pauline and David Patchett
Sound	Simon Miller
Laptop	Sue Hirst
Offering	Lynette Burrell, Katrina Harper
Coffee/tea	Vivienne Mountier, Kath Kerr, Janet Horncy
Family Time	Cam Smart
Readings	Gillian Feist
Prayers of the People	Anna Smith
Communion	Maxine and Jiom Cunningham, Paul Barber, Barrie Keenan, David Douglas, Vhaari McWha
Rainbow Room	In recess
Library	Pauline Patchett
Musician	Peter Franklin

### **This Week and Coming Events at St Andrew's**

**Sunday 24 March: 10am** Sunday Gathering service led by Rev Dr Fei Taule'ale'ausumai followed by Social Justice Education Group

**Wednesday 27 March: 10:30am** - Cuppa and a Chat in the Centre

**12:15pm** – Lunchtime concert: Amiki Trio - "Tales of Love and Enchantment"

**Friday 29 March: 10:00am** – Good Friday service service led by Rev Dr Fei Taule'ale'ausumai

**Sunday 31 March: 10am** Easter Sunday communion service led by Rev Dr Fei Taule'ale'ausumai

### **STANDARD MONTHLY SUNDAY CYCLE OF ACTIVITIES AFTER SERVICE**

1st Sunday Communion service followed by Exploring Faith.

2nd Sunday Congregational Brunch on even months Feb, April, June, Aug, Oct, Dec.

3rd Sunday Congregational Conversation and Younger members' (Y) group meets after morning tea/brunch

4th Sunday Social Justice Education Group

5th Sunday if there is one - nothing planned

# MISSION STATEMENT OF ST ANDREW'S ON THE TERRACE

To create a lively, open Christian faith community,  
to act for a just and peaceful world, and to be catalysts for discovery,  
compassion and celebration in the capital.

## MINISTRY AT ST ANDREW'S – THE TEAM

Minister	Rev Dr Fei Taule'ale'ausumai
Parish Council Convenor	Sue Hirst
Treasurer	Paul Barber
Facilities Management Group	Sandra Kirby
Pastoral Care Team	Pat Booth, Brian Burrell, Maxine Cunningham, Katrina Harper
Theologian in Residence	Lloyd Geering
Presbytery Representative	David Douglas
Church Music Coordinator	Vacant
Eco Church Coordinator	Sonia Groes-Petrie
Faith in Action Coordinator	Paul Barber
Rainbow Room Coordinator	Vacant
Roster Coordinator	Pam Fuller
Concert Coordinator	Kristina Zuelicke
Centre Manager	Adelina Reis
Office Administrator	Christine Wilkinson
Facilities Assistant(s)	H. Wilkinson, O. Ruegg, L. Oakley, M. Barber

## St Andrew's on The Terrace

[www.standrews.org.nz](http://www.standrews.org.nz)

30 The Terrace – P O Box 5203, Wellington 6145

Office Hours: 9 am – 5 pm Monday to Friday

Phone (04) 472-9211

[office@standrews.org.nz](mailto:office@standrews.org.nz)



**Minister : Rev Dr Fei Taule'ale'ausumai**

Office: (04) 472-9376, Cell: 021-836 060

[minister@standrews.org.nz](mailto:minister@standrews.org.nz)

