

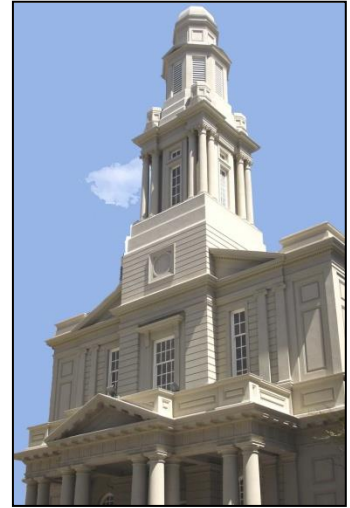
St Andrew's on The Terrace

Hato Anaru o Te Parehua

Founded 1840

ORDER OF SERVICE

18 September 2016



Pentecost 18



Imagine ... Wonder

3rd Sunday of Creation **The Cosmos**

WELCOME TO ST ANDREW'S ON THE TERRACE

Wherever you are on your faith's journey,
wherever you have come from and wherever you are going to,
whatever you believe, whatever you do not believe, you are welcome here.

Please join in the congregational responses printed in ***bold italics***.

Please stand if you are able, for the hymns and the offering prayer.

We will sing the hymns without announcement.

To use the loop system in the church, turn your hearing aids on to the appropriate setting.

Please note your nearest fire exit.

The church and hall have been earthquake strengthened. In an earthquake: drop, cover and hold.

GATHERING

Welcome! We worship this Sunday with the entire universe,
conscious that the cosmos is a vast sacred space
of which we humans on Earth are a minute, but privileged, part.
We celebrate the wondrous spiritual force
that permeates, activates and unifies
the web of worlds that is our cosmos.
We join the Psalmists
and call on the skies above
and the deeps below to shout with songs of praise.
God's presence pulses through all galactic space
across light years of time.
We join together, in this nano-second we call 'now',
in this nano-space we call 'here'.

CREATION HYMN (*music follows*)

'In our world' Vs 1, 8, 10

Words: © 2016 Susan Jones. Music: © 2016 Vivien Chiu.
Used by Permission. All Rights Reserved

In our world we find delight
for creation, day and night,
brings us solace, joy;
Spirit grows, refreshes, gleams
as the earth fuels richer dreams
just by being here;

Chorus:
May this beauty never end
May this solace always be here
May the human race take notice
and show divine compassion.

Looking into starry skies
galaxies defeat our eyes
distant stardust glows;
spinning planets circle suns
stars are born, supernovae stun
cosmos is our 'hood;

Chorus:
May this beauty ever end
May this universe remain here
May the human race take notice
and show divine compassion

It's a mystery who made this -
evolution, hand-made care -
multiple ideas.
But it's not a mystery who
needs to care for green and blue -
we have all been charged

Chorus:
To make sure this never ends
That this beauty does remain here
That the human race takes notice
And show divine compassion

♩=102



(first vs) In our world we find de - light for cre - a - tion, day and night,
(last vs) It's a mys - tery who made this - e - vo - lu - tion, hand - made care -



brings us sol - ace, joy; Spir - it grows, re - fresh - es, gleams
mul - ti - ple i - deas. But it's not a mys - tery who



as the earth fuels rich - er dreams just by be - ing here; May this
needs to care for green and blue; we have all been charged. To make



beau - ty nev - er end. May this sol - ace al - ways
sure this nev - er ends, that this beau - ty does re -



be here. May the hu - man race take no - tice. And
- main here, that the hu - man race takes no - tice and



show di - vine com - pas - sion.
shows di - vine com - pas - sion.

OPENING RESPONSES

We invite the cosmos to worship with us.

***We invite glittering galaxies high in the sky
to radiate the splendour of God's presence.***

We call distant domains of space to celebrate with us.

***We invite nebulae, novae and black holes
to thank God for their fascinating formation.***

We summon that piece of stardust called Earth,
***To pulse with the rhythm of God's presence
and celebrate God's glory in this planet garden.***

We invite every creature in the web of creation.

***To consciously connect with others
in this community called the cosmos.***

Dance, creation, dance!

Dance with cosmic energy!

WELCOME

Kia ora tatou.

Kia ora.

PASSING THE PEACE

Feel free to pass the peace with those nearby or move to greet others further away. Passing the peace consists of shaking hands and saying "Peace be with you." The response is "Peace be with you" or just "And with you." Or, simply saying "Hello" is a good idea. Also feel free to simply observe if you wish!

BUDDHIST PRAYER FLAGS OF THE ELEMENTS

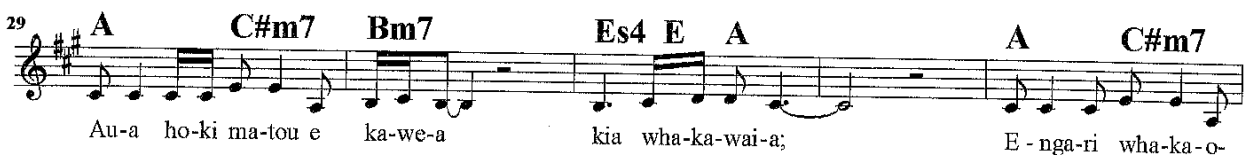
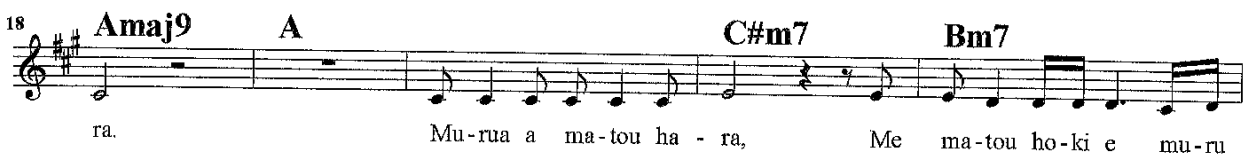
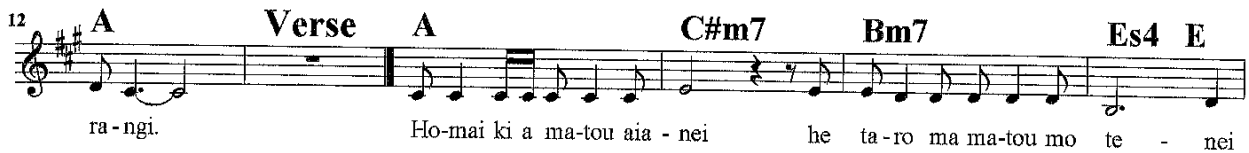
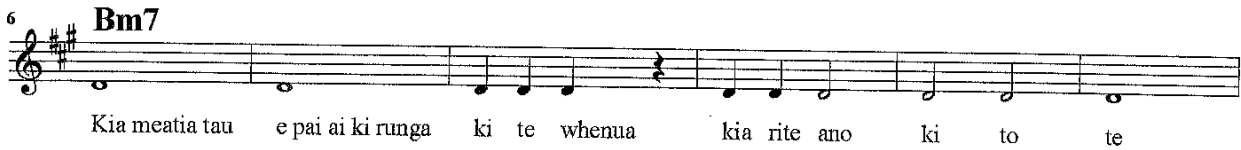
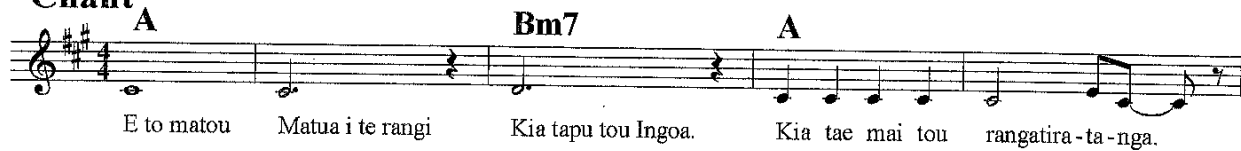
We give thanks for creation,
we bless the elements that impact our lives in many ways,
for the sky and the wonder of space (Blue),
for the air that is our life source (White),
for fire that gives warmth (Red),
for water that sustains us (Green),
for the earth we live on (Yellow),
and this Sunday we marvel at the cosmos that encompasses all of these
elements, from the centre of the earth out to the vastness of the universe.

LORD'S PRAYER *(sung in Maori, music follows)*

Led by Chris Carey-Smith

E to mātou Mātua i te rangi,
Kia tapu tōu ingoa.
Kia tae mai tōu rangatiratanga.
Kia meatia tau e pai ai ki runga ki te whenua,
Kia rite ano ki to te rangi.
Homai ki a mātou āiane i he taro mā mātou mo tēnei rā.
Murua o mātou hara, me mātou hoki e muru nei
I o te hunga e hara ana ki a mātou.
Aua hoki mātou e kawea kia whakawaia;
Engari whakaorangia mātou i te kino.
Nou hoki te rangatiratanga, te kaha, me te kororia,
Āke, āke, āke. Amine.

Chant



WHATEVER NEXT!

Dramatized Story

THE WORD IN TEXTS

Colma Froggatt

Hebrew Bible

Psalm 8

RESPONSE

For the Word in scripture,
for the Word among us,
for the Word within us,
we give thanks

REFLECTION

‘Connectedness’

Chris Carey-Smith

HYMN

‘The Cosmic Christ’

Words: Norman Habel. Tune: Amazing Grace CH4 555i

The cosmos hails the Christ, the one who reconciles all things,
‘til all creation rises new with healing in her wings.

The hidden Christ sustains for us, the blueprint of the skies,
the wisdom in each fragile form, the soul that lights the eyes.

The cosmic Christ moves deep below, to heal the wounds within,
when all creation groans in pain because of human sin.

As Christ unites the universe, restores this earth once more,
a cosmic song reverberates, a rich symphonic score.

OFFERING *(during hymn)*

***Thankyou that everything is connected, our lives, our possessions.
We gratefully offer part of our abundance for the greater good, the
purposes of our church and the wider community. Amen***

*We recognise and bless the gifts brought to the table, and those which wing
their way electronically from our banks to the church's account.*

AFFIRMATION OF FAITH

God of the cosmos, teach us to empathize with earth
***Make our spirits sensitive to the cries of creation,
cries for justice from the land, the seas and the skies.***

Universal Spirit, make us sensitive to the groans of the Spirit
***As we long for a new creation, a new consciousness,
peace and sharing in all humanity.***

Jesus Christ, make our hearts sensitive to the songs of humanity
***Those different from us, those excluded by us, those invisible to us.
Together we care for the cosmos we are all part of,
as we acknowledge our connection to each other.***

REFLECTIVE ACTIVITY

Walk around the church looking at the images our cosmos.

Ask yourself which ones give you a sense of awe, then stick a star on the edge of the ones that inspire you.

Think about the place where you would most like to go to.

Ask yourself why this place most intrigues you, even if only in your imagination. Write this place on a post-it and stick it on the black board.

PRAYERS OF THE PEOPLE

Sandra Kirby

CIRCLE OF PRAYER

We think today of the people of Sudan and Christian World Service partner the Sudan Council of Churches providing assistance and services to people in the villages and displaced within the region including income generation, peace building, HIV and AIDS awareness, and opportunities for youth, especially former child soldiers, to get a formal education and livelihood options. In New Zealand, we remember those in Parliament, and today we name Ron Mark and Tracey Martin List MP's. Here in Wellington, we pray for the leaders and people of the Pacific Islanders Congregation Church of Christ The King.

PRAYER FOR ST ANDREW'S

on card

LIFE IN THE COMMUNITY OF ST ANDREW'S

*People share notices and visitors are welcomed. If you have a notice not already in the order of service, please move to the front row, ready to speak **briefly** from the lectern.*

For the benefit of newcomers, please introduce yourself before you begin.

HYMN

'You've got the whole world in your hands'

Music: Traditional Spiritual. Words: Adapted by Chris Carey-Smith

You've got the whole world in your hands (X4)

You've got the stars and planets in your hands (X4)

You've got the galaxies in your hands (X4)

You've got all creation in your hands (X4)

You've got you and me in your hands (X4)

BLESSING AND SUNG AMEN

Spirit of Creation, as we reflect on the mysteries of the cosmos,
we celebrate the wondrous design of the universe
and the Wisdom that guides its course.

Help us to discern how we are connected
with living members of the cosmic community.

Teach us to sense the presence of the cosmic Christ,
whose presence fills and reconciles all forces in creation.

POSTLUDE

Trumpet Voluntary by Jeremiah Clarke (1674 - 1707)

THANK YOU

Peter Franklin
our musician today

Unless otherwise specified all our music is used by permission CCLI Licence 3341550

There is a 2-hour parking limit on the street in the Wellington CBD on Sundays.

If you are staying for an after-church activity, you can move your car into the car park, or move to a new space on the street.

We welcome all visitors and invite you to stay for morning tea or coffee.

Please sign the visitors' book at the back of the church.

We hope you enjoyed worshipping with us. At St Andrew's we want you to feel at home—to join in with the activities of our community of faith, or to come and find your own spiritual place in your own time. If you would like more information about St Andrew's or to explore becoming a member or associate member, please fill in one of the welcome leaflets (at the back of the church) and hand it to a minister or a welcoming team member.

AUDIO REFLECTIONS



Sunday reflections are usually available on our website.
<http://www.standrews.org.nz/sunday-gathering/orders-of-service>

GENEROUS GIVING

St Andrew's depends on the generous giving of members and friends. If you would like to make a donation or support our work through planned giving, please contact our Parish Office or Treasurer. Bank account for donations is: St Andrews on The Terrace, BNZ Lambton Qy, 02-0534-0004022-02

SUNDAY ROSTERS

A folder with an outline of each duty is now kept on the back table. If you are unable to do your rostered duty please arrange a swap/substitute and inform the office. Thank you.

Thanks to this week's volunteers

Welcoming	Trish McBride, Lois Robertson
Sound	Frank Cook
Offering	Jon Schrader, Graham Howell
Coffee/tea	Katrina Harper, James Cone, Richard Owen
Time with the Children	Rainbow Room Service
Readings	Colma Froggatt
Prayers of the People	Sandra Kirby
Musician	Peter Franklin
Rainbow Room Helper	Not Required

On duty 25 Sep	
Welcoming	Pam Fuller, Heather Macfarlane
Sound	Peter Cowley
Offering	Joan Tyler, Norman Wilkins
Coffee/tea	Janet Horncy, Wendy & Andrew Matthews
Time with the Children	Margaret Megwyn
Readings	Wendy Matthews
Prayers of the People	Colma Froggatt
Musician	Vivien Chiu
Rainbow Room Helper	Molly Seah

This Week and Coming Events at St Andrew's

Sunday 18 September 10am Sunday Gathering led by Chris Carey-Smith and the Rainbow Room. Followed by Social Justice Meeting
3pm Young Musicians Programme Concert
Wednesday 21 September Cuppa and a Chat from 10.30am in the Centre
Wednesday 21 September 12.15pm Lunchtime Concert – Classical Voice Students of the NZSM
Thursday 22 September 12.30pm Centering Prayer in the Centre.
Sunday 25 September 10am Sunday Gathering led by Trish McBride
 Followed by Exploring the Faith Study session Conference Room 2
2.30pm Wellington Chamber Orchestra Concert (ticketed)

ST ANDREW'S COMMUNITY NOTICES

WELCOMING SUNDAY

Sunday 2nd October we are welcoming new Whanau, Associate Members and Members and celebrating any changes in connection. If you are a newcomer (last couple of years) please contact Susan ASAP.

ST ANDREW'S GARDEN UPDATE

The sun shone on the 3rd September for our first working bee and we had a productive afternoon digging over the area and adding compost to ready the soil for our plants. Thanks to everyone who came and helped out. The next working bee to plant out our first lot of green veggies is happening **Saturday 24th September** 10am-11:30am. If you would like to join us please contact Sonia on mob: 027 4051302, hm ph.: 385 4049 or email: soniapetrie@gmail.com

MISSING FOOD DONATION BASKET

Our blue basket for the collection of food to be donated to DCM has gone walkabout. If anyone knows where it is, please advise Brian Burrell or the office. Thank you.

DAYLIGHT SAVINGS TIME – 25TH SEPTEMBER (SPRING FORWARD)

A reminder that Daylight Savings time will begin on Sunday 25th September. Remember to **turn your clocks forward one hour** Saturday evening before bed so that you are not late for Church on Sunday!

WIDER CHURCH AND COMMUNITY NOTICES

ALZHEIMERS WELLINGTON MEMORY WALK

The Alzheimers Wellington Memory Walk is for people of all ages and abilities to raise awareness of dementia and to honour and remember family and community members affected by dementia. **Sunday 18th September 2016.** Starting at 1.30pm. Walking along Wellington Waterfront from Waitangi Park to Frank Kitts Park. We will be walking in any weather, so bring your family/whānau, wear purple, and join us for our 2016 Memory Walk.

YOUNG MUSICIANS PROGRAMME CONCERT

Sunday 18th September 3pm, St Andrews on the Terrace. Celebrating our pre-tertiary programme students' work and achievements. This concert will feature performances from students in the piano, string, voice, guitar and chamber classical classes. Entry by koha. Kindly sponsored by Music Futures

NEW ZEALAND FABIAN SOCIETY LECTURE

The next lecture will be held 5.30pm on **Tuesday 20th September** at Wesley Church, 75 Taranaki St, Wellington. Listen to Ann Pettifor: "Delivering the Green New Deal". Details on the noticeboard at the back of Church or visit;

http://www.fabians.org.nz/index.php?option=com_civicrm&task=civicrm/event/info&reset=1&id=205

CHILD POVERTY ACTION GROUP

CPAG invite you to a Wellington seminar on **Wednesday 21st September** from 5.30pm-7pm at Victoria University, Pipitea Campus, Rutherford House. Discussing benefit fraud and the effects on families and children in poverty. For more information contact admin@cpag.org.nz or visit

<http://campaign.r20.constantcontact.com/render?m=1112873799021&ca=95bf9237-0214-42ba-8790-2428f5db4d83>

DRAMA CHRISTI PRODUCTION

Drama Christi presents "The Government Inspector", a comedy by Nikolai Gogol set in 1800's Russia is a tale of corruption, hubris and a delicate handling of the truth.

A satirical play by the Russian and Ukrainian dramatist and novelist Nikolai Gogol, published in 1836. Performances over 2 weekends; Fri 16 Sep at 7.30pm, Sat 17 Sep at 4.00pm, Sun 18 Sep at 4.00pm and Thurs 22 Sep at 7.30pm, Fri 23 Sep at 7.30pm, Sat 24 Sep at 4.00pm, Sun 25 Sep at 4.00pm. In Drama Christi Studio Theatre, behind Wesley Church, 75 Taranaki Street, Wellington. Waged; \$15 Unwaged; \$10 Family; \$45 Bookings, phone: Ph. 389 9879 or email; pawf@xtra.co.nz

<https://www.facebook.com/DramaChristi/>

COMMUNITY AND VOLUNTARY SECTOR RESEARCH FORUM

This is a networking opportunity to share and report on current research, supported by Hui E! Community Aotearoa. **Tuesday 27th September**, 3:00pm – 5:00pm at Railway West Wing, room 129. RSVP: lynn.barlow@vuw.ac.nz Refreshments will be served

from 2:45pm. Speakers: Brent Kennerley, Ruth Weatherall and Christopher D.B. Burt.
<http://www.victoria.ac.nz/vbs/research-services/researchpartnerships/cvsr-forums>

AWAKEN CONFERENCE NZ – 21 – 24 OCTOBER

This Labour weekend LGBT Christians, families, friends and church leaders come together for a weekend-long LGBT Christian conference. An awesome opportunity to network and hear from NZ and international speakers, on how to create safe spaces for LGBT Christians and related topics.

<https://www.facebook.com/Awaken-Conference-NZ-1736867023227681/>

Anyone wishing to donate towards Conference costs please speak to Susan.

GENERAL ASSEMBLY 15TH -19TH NOVEMBER IN DUNEDIN

The Moderator Designate is sending out regular GA. You can find the update via this link:

http://www.presbyterian.org.nz/sites/public_files/10_Aug_GA16_Update.pdf

**St Andrew's Trust for the Study of
Religion and Society**



Consistency's Curse!

Tuesday September 27, 12:15 - 1pm

Bernard Beckett



Precis: As a great admirer of modern science, and as a passionate agnostic, I have always struggled to define a personal philosophy that might provide a grounding for our expanding understanding of the physical world, while underpinning my reluctance to commit to particular cultural mythologies. Although at first blush the two appear to lead easily into some form of naturalism, I've never been convinced by this approach. My talk will be an attempt to outline my current position, with regard to both the philosophy of science and those beliefs that sit necessarily beyond its influence. My tentative conclusion is one of what I shall call collective objectivism, and I will attempt to explore the relative merits and pitfalls of my evolving stance.

Bio: Bernard Beckett has been a high school teacher for the last twenty five years. During that time he has taught Mathematics, Economics, English, Media Studies, Philosophy and Drama.

He is the author of ten novels and a book of non-fiction, *Falling for Science*, which explored the relationship between science and story telling. He lives in Porirua with his wife, Clare, and his four year old boys, Alexander and Sebastian and with the birth of our third child, a delightful, albeit nocturnal, young chap by the name of Avery, our family is complete. I couldn't be happier.

A much more in-depth bio is available at
<https://bernardbeckett.wordpress.com/bio/>

MISSION STATEMENT OF ST ANDREW'S ON THE TERRACE

To create a lively, open Christian faith community,
to act for a just and peaceful world, and to be catalysts for discovery,
compassion and celebration in the capital.

MINISTRY AT ST ANDREW'S – THE TEAM

Minister	Susan Jones
Parish Council Convenor	Sandra Kirby
Parish Council Clerk	Maxine Cunningham
Treasurer	Paul Barber
Facilities Management Group	Douglas Wood
Pastoral Convenors	Fiona McDougal, Brian Burrell, Linda Wilkins
Church Music Coordinator	Vivien Chiu
Theologian in Residence	Lloyd Geering
Presbytery Representative	Heather Macfarlane
Concert Coordinator	Marjan van Waardenberg
Rainbow Room Coordinator	Chris Carey-Smith
Church, Conference and Arts Manager	David Medland
Office Assistant	Karyn Bishop
Custodian, SATRS Administrator	Peter Cowley
Facilities Assistant	Rebecca Nodwell
Roster Coordinator	Rosemary Lawrence

St Andrew's on The Terrace

www.standrews.org.nz

30 The Terrace – P O Box 5203, Wellington 6145

Office Hours: 9 am – 5 pm Monday to Friday

Phone (04) 472-9211

office@standrews.org.nz



Rev Dr Susan Jones

Office: (04) 472-9376. Home: (04) 909-9612. Cell: 027-321-4870

minister@standrews.org.nz

