

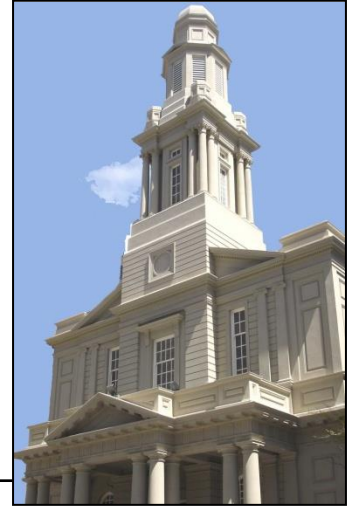
St Andrew's on The Terrace

Hato Anaru o Te Parehua

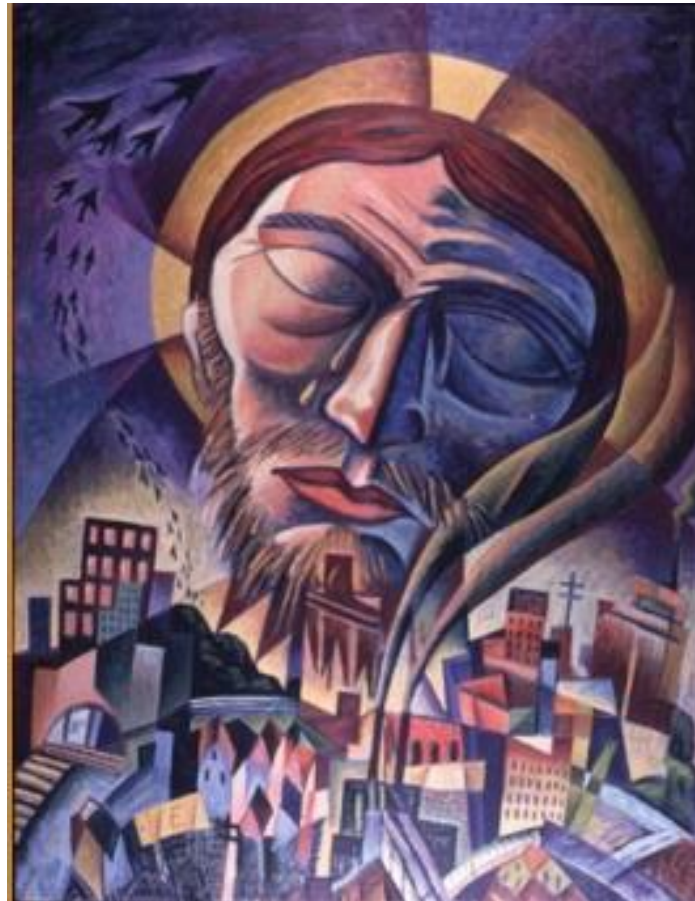
Founded 1840

ORDER OF SERVICE

21 February 2016



Second Sunday in Lent



'Jerusalem, Jerusalem'

James B. Janknegt: *Man of Sorrows*, 1990

WELCOME TO ST ANDREW'S ON THE TERRACE

Wherever you are on your faith's journey,
wherever you have come from and wherever you are going to,
whatever you believe, whatever you do not believe, you are welcome here.

Please join in the congregational responses printed in ***bold italics***.

Please stand if you are able, for the hymns and the offering prayer.

AA is the NZ hymnbook Alleluia Aotearoa. We will sing the hymns without announcement.

Please note your nearest fire exit.

The church and hall have been earthquake strengthened.

In an earthquake: drop, cover and hold.

GATHERING

On this second Sunday of Lent
we join Jesus above Jerusalem
in a human moment of despairing love.
Today we consider what his reaction would be,
what ours would be, should we stand on Mt Victoria
and consider how humanity treats
the right and true, the good and the loving.
Would we leap with joy or, too, weep tears of pain?

PROCESSIONAL HYMN

'Finding God'

Words: Graham Maule, John L Bell from *Enemy of Apathy* pp14/15
©1988 WGRG, The Iona Community. Tune: St Patrick (Irish trad) Ch4 639(i)

Where can we find the God who made
and wants us for God's very own?
How can we know the God by whom
all that is yet to be is known?
When shall we meet the God whose name
each age has called on, cursed and blessed,
the God by whom both cosmic power
and new born baby are addressed?

God's found where human life is prized,
and human worth affirmed and warmed;
Where hated hearts become forgiven
and untouched lives become transformed;
In lantern face of wisdom's age,
in wide-eyed children's fresh rapport,
in those with whom God bids us share
the things that heaven and earth are for.

God's found where silence is not feared
the silence which we seldom seek
in case our consciences rebel
or God, in confidence, should speak;
Unfathomed sense conveyed by sound,
and that magnificence of love
upon which heaven and earth are ground.

God's found in following Jesus Christ,
who summons all to set aside
the mess and masks of daily life
behind which things we often hide.
The finding comes through following close,
inspired by trust, surprised by grace;
Both, contradicting common sense,
make all of heaven and earth God's place.

OPENING RESPONSES *(please remain standing)*

Distance is measured in heartbeats sometimes

We can be standing very close to another yet miles away

Distance is not only a matter of geography

But a matter of the heart

We stand here, but where are we?

Where are others in relation to us and in relation to Christ?

WELCOME

Kia ora tatou.

Kia ora.

PRAYER

JESUS PRAYER

Jim Cotter paraphrase on card

LIGHTING THE RAINBOW ROOM CANDLE

TIME WITH THE CHILDREN

Pam Ormsby

BLESSING THE CHILDREN *(All stand)*

We send you to the Rainbow Room programme to hear stories, ask questions and
have fun together. God bless you. ***Amen.***

PASSING THE PEACE

Feel free to pass the peace with those nearby or move to greet others further away. Passing the peace consists of shaking hands and saying "Peace be with you." The response is "Peace be with you" or just "And with you." Or, simply saying "Hello" is a good idea. Also feel free to simply observe if you wish!

THE WORD IN TEXTS

John Morgan

Hebrew Bible

Psalms 27

Gospel

Luke 13:31-35

Contemporary reading

'Brought to Tears'

by Susan Jones

Brought to Tears

The journey to Jerusalem is never easy,
not any easier now, with this dread feeling
that it was all for the last time.

Those moments when it seemed
you walked in slow motion, all sound muted;
looking at and seeing the faces, but not hearing their words
your own mind racing
"Listen!" you wanted to shout, "Listen now!
Take heed of what I say! Now! I won't be back, you know!"

When you saw the city
the beloved temple gleaming in the setting sun
suddenly it was all too much, and the tears came.

So many times Jerusalem had been told the good news.
So many times it had not listened,
its sophisticated multicultural society
believing it was too knowledgeable to need to look inside
and see what was needed – what was the 'one thing necessary'.

It was too much to bear without tears filling your eyes,
dropping one by one on the dusty path
one by one down the steep hillside,
bouncing off shiny olive leaves,
hissing into steam on sun scorched ground.

tears of frustration and grief,
tears of love.

RESPONSE

For the word of God in scripture,
for the word of God among us,
for the word of God within us,
we give thanks

HYMN

'Jerusalem, Jerusalem'

Tune: Brood. Words: Graham Maule, John L Bell. From *Enemy of Apathy*,
Wild Goose Publications p. 23 ©1988 WGRG The Iona Community

Jerusalem, Jerusalem,
you murder the prophets
and silence those God sends you.

How many times
I wanted to embrace you!
But you would never let me.

Therefore your homes,
your city and your temple
will be, by God, forsaken.

Never again
will you know my presence
until you meet me, saying,

"Blessed is he
who comes in the name,
in the name of the Lord."

REFLECTION

'Can we accept the embrace of Love?'

Susan Jones

OFFERING PRAYER *(said together)*

***With humility we give thanks that we have goods and money we
can give this day. We ask those distributing these resources
will be gifted with wisdom and insight in the giving. We look to
the day when all people will be gathered at the feast of love
and satisfied in the ways they need satisfying.
Amen.***

*We recognise and bless the gifts brought to the table, and those which wing
their way electronically from our banks to the church's account.*

TIME WITH THE ADULTS

Kia Ora Whanau

Words: Jim Russ (adpt Chris Carey-Smith) ©1997 Elkanah Music

Kia ora whanau kia ora whanau
It's so good to be together again
Kia ora whanau ehoa mai
Welcome we belong right here.

Kia ora whanau haere mai
Come and discover afresh
Listen, question, imagination
Connecting Life and Faith.

LIFE IN THE COMMUNITY OF ST ANDREW'S

*People share notices and visitors are welcomed. If you have a notice, please move to the front row,
ready to speak **briefly** from the lectern.*

For the benefit of newcomers, please introduce yourself before you begin.

PRAYERS OF THE PEOPLE

Paul Barber

CIRCLE OF PRAYER

We think today of the people of Myanmar and the Myanmar Council of Churches. In New Zealand, we remember those in Parliament, and today we name Jacinda Ardern and Clayton Cosgrove list MP's. Here in Wellington, we pray for the leaders and people of the Pacific Islanders Congregation, Newtown.

PRAYER FOR ST ANDREW'S

on card

HYMN

CH4 63 Psalm 100

Melody from Gevevan Psalter, 1551

(An organ fanfare and 1st line of hymn are played as introduction to the hymn)

All people that on earth do dwell,
sing to the Lord with cheerful voice:
him serve with mirth, his praise forth tell;
come ye before him and rejoice.

Know that the Lord is God indeed;
without our aid he did us make:
we are his folk, he doth us feed,
and for his sheep he doth us take.

O enter then his gates with praise,
approach with joy his courts unto;
praise, laud and bless his name always,
for it is seemly so to do.

For why the Lord our God is good;
his mercy is for ever sure;
his truth at all times firmly stood,
and shall from age to age endure. *(organ)*

Praise God, from whom all blessings flow,
praise God, all creatures here below,
praise God above, ye heavenly host,
Creator, Saviour, Holy Ghost. *(organ)*
Amen

BLESSING

SUNG AMEN

POSTLUDE

Arrival of The Queen of Sheba

From the oratorio Solomon (1749) by G F Handel (1685-1759)

THANK YOU

Peter Franklin

Our musician today

Unless otherwise specified all our music is used by permission CCLI Licence 3341550

*There is a 2-hour parking limit on the street in the Wellington CBD on Sundays.
If you are staying for an after-church activity, you can move your car into the car park,
or move to a new space on the street.*

We welcome all visitors and invite you to stay for morning tea or coffee.

Please sign the visitors' book at the back of the church.

We hope you enjoyed worshipping with us. At St Andrew's we want you to feel at home—to join in with the activities of our community of faith, or to come and find your own spiritual place in your own time. If you would like more information about St Andrew's or to explore becoming a member or associate member, please fill in a blue "Belonging" form (at the back of the church) and hand it to a minister or a welcoming team member.

AUDIO REFLECTIONS



Sunday reflections are usually available on our website.

<http://www.standrews.org.nz/sunday-gathering/orders-of-service>

GENEROUS GIVING

St Andrew's depends on the generous giving of members and friends. If you would like to make a donation or support our work through planned giving, please contact our Parish Office or Treasurer. Bank account for donations is: St Andrews on The Terrace, BNZ Lambton Qy, 02-0534-0004022-02

SUNDAY ROSTERS

A folder with an outline of each duty is now kept on the back table. If you are unable to do your rostered duty please arrange a swap/substitute and inform the office. Thank you.

Thanks to this week's volunteers

| | |
|------------------------|----------------------------------|
| Welcoming | Judith Cowley, Lois Robertson |
| Sound | Paul Satherley |
| Offering | Jon Schrader, Margaret Pannett |
| Coffee/tea | Peter Bacos, Tony & Sandra Kirby |
| Time with the Children | Pam Ormsby |
| Readings | John Morgan |
| Prayers of the People | Paul Barber |
| Musician | Peter Franklin |
| Rainbow Room Helper | Molly Swee Keng Seah |

On duty Sunday 28 February

| | |
|------------------------|--------------------------------------|
| Welcoming | Frank & Nola Hanson |
| Sound | Peter Cowley |
| Offering | Graham Howell, Joan Tyler |
| Coffee/tea | Ann Barrie, James Cone, Janet Horncy |
| Time with the Children | Fiona McDougal |
| Readings | Francis Porter |
| Prayers of the People | Cameron Smart |
| Musician | Vivien Chiu |
| Rainbow Room Helper | Fionnaigh McKenzie |

This Week and Coming Events at St Andrew's

Sunday 21 February 10am Sunday Gathering led by Susan Jones

Followed by Social Justice meeting

Wednesday 24 February Cuppa and a Chat from 10.30am in the Centre

Wednesday 24 February 12.15pm Lunchtime Concert – Sue Robinson | Piano recital

Thursday 25 February 12.30pm Centering Prayer in the Centre

Sunday 28 February 10am Sunday Gathering led by Susan Jones

Followed by Living the Questions study session in conference room 3

ST ANDREW'S COMMUNITY NOTICES

REFLECTIONS AND GATHERINGS FOR LENT AND EASTER 2016

During Lent, Lenten Reflections will happen each **Wednesday evening, (February 24th, March 2nd, 9th, and 16th)** in the Green Room of the St Andrew's Centre. They begin at 6.30pm with half an hour of coffee/tea and simple refreshments.

The reflection period itself begins at 7pm including biblical readings, poetry, silence and discussion revolving around a character within the passion narrative leading up to Jesus' trials. A finish at 8pm is the aim.

Palm Sunday 20th March, 10am, musically 'flavoured' Gathering: 'Palm and Passion.'

Maundy Thursday, 24th March, 6.30pm. The Gathering will take the same format as the Lenten Reflections (above) and include communion.

Good Friday 25th March, 10am. Our Gathering in the church will reflect on those who were present with Jesus at the cross.

Easter Sunday 27th March, 10am. Easter Day Celebration in the church including communion.

GOOD FRIDAY SERVICE.

If you'd like to be involved in creating the service for Good Friday this year you are invited come along to a meeting after church on Sunday February 28th. We're particularly looking for people respond creatively to some of the events/ people in the Good Friday story. Want to know more? Talk to Fiona or Susan.

RAINBOW ROOM HOUSEKEEPING

A reminder that Chris Carey-Smith will have safety forms available after Church again for all helpers who didn't get them last week.

ART TO YOU – (please note change of time)

I have works in an exhibition at Pablos Roar Gallery, 189 Vivian St, Wellington opening on **Thursday 3 March** at 12pm-1pm. Please join us for the opening or visit to view in the following months. Hours Wednesday – Friday 11am – 6pm. Jon Schrader.

LIVING WAGE

A proposal has been submitted to the Wellington City Council that they should include the following provisions for implementing the Living Wage in their 2016/2017 Annual Plan:

1. Match the minimum rate paid to the Council workforce to the current NZ Living Wage rate.
2. Extend the Living Wage to workers employed via contractors and in CCOs (Council Controlled Organisations)
3. Put in place a plan to become a fully-accredited Living Wage employer by June 2018.

The proposal has been prepared by Living Wage Wellington and has been endorsed by 26 organisations in Wellington including St. Andrew's.

Norman Wilkins is scheduled to speak on behalf of St. Andrew's to support the proposal on **Monday 22nd at 1.15pm**. Please come to the Council Chamber to support him if you can. Norman has left a couple of copies of the proposal at the back of the church and more can be obtained from him by email. g8m8z@orcon.net.nz

Three other Living Wage events:

The new Living Wage rate will be announced on **February 29th at 3pm** at Pivotal Thames, Martin Place (off Taranaki St.) For catering purposes please RSVP to lyndy.mcintyre@livingwage.org.nz . (see invitations at the back of the church).

Living Wage network get-together and AGM on **March 2nd at 5pm** at 3rd floor, NZEI, Education house, 178 Willis Street.

Living Wage will be launched in the Hutt Valley on **March 16th at 6pm** at Pomare School.

WIDER CHURCH AND COMMUNITY NOTICES

INVITATION

The National Dialogue for Christian Unity (NDCU) will hold its inaugural annual forum in Wellington at 5pm on **25 February 2016**. You are invited to attend a service of celebration at the Sacred Heart Cathedral, Hill Street, Wellington.

Please respond to Rev. Prince Devanandan Interim Secretary – N D C U at Email princd@methodist.org.nz

NZ HE FOR SHE CAMPAIGN

Please consider visiting the HeForShe website: www.HeForShe.org This new online experience provides supporters with easily accessible tools to crowd-source, take concrete action and amplify equality issues across the world. The new platform also tracks global impact by displaying real-time data about ongoing HeForShe conversations, commitments, and events happening across the globe. You can also visit the facebook page <https://www.facebook.com/HeForSheNZ/>

FIND OUT MORE ABOUT THE TPPA

If you wish to keep up-to-date with developments please check the following websites;

<http://tpplegal.wordpress.com/> -5 Expert Papers

<http://itsourfuture.org.nz> TPPA Text Information Sheets

<http://www.tppafacts.co.nz> - Action Stations information site

<http://union.org.nz/subject/tppa> - Bill Rosenberg's research papers on TPPA for the NZCTU

<http://en.wikipedia.org/wiki/> - Trans-Pacific-Partnership

Please find below a link for making submissions on the TPPA:

http://www.parliament.nz/en-nz/pb/sc/make-submission/51SCFDT_SCF_00DBSCH_ITR_68247_1/international-treaty-examination-of-the-trans-pacific-partnership

RE-STOKE THE FIRES - TĀWHIRITIA NGĀ AHI

ILGA Spiritual Gathering

Thursday 10 March 2016 @St Peters Willis Street - 6pm

An opportunity for the LGBTIQ Community and our Allies to gather and celebrate shared faiths and spirituality in a safe and prayerful environment. St Peters has been at the forefront of inclusive support and worship for over 50 years, honouring all sectors of society - not least the LGBTIQ community. ILGA offers this time and space for you to come and be as you are, and share time together in a safe and appropriate atmosphere. Everyone - of all faiths and none - is warmly invited on that evening and/or participate in the planning, and individuals or groups who would like to share in the planning, singing, music, talking, or just being. If you would like to be part of this event, please email Mani at mani.mitchell@xtra.co.nz or Graham at brgeem@gmail.com

PROGRESSIVE SPIRITUALITY NZ CONFERENCE

Friday 6th to Sunday 8th May at St Paul's Presbyterian Church,
89 Tennyson Street, Napier.

"Common Ground. Faith as Resistance to Ego, Orthodoxy, and Empire".

Keynote speaker Rev Dr Robin Meyers.

"Let our resistance be of love". Other speakers include Jo Randerson, and Rev David Clark MP. For further information please visit www.progressivespirituality.co.nz.

Some St Andrew's people are intending to attend. Join the group?



St Andrew's Trust for the study of Religion and Society

Post-Holocaust: Continued Persecutions of Sexual Dissidents since World War II

William J Spurlin, Brunel University

St Andrew's on The Terrace

Wellington, New Zealand

Tuesday, 8 March, 12:15pm – 1pm



This lecture provides a contextual overview of the experiences of gay men and lesbians under National Socialism, especially the ways in which the Nazi regime targeted homosexual men and the varying degrees of tolerance and actual persecution directed by the regime toward lesbians. Operating on the premise that Nazi homophobia must not be reduced to a momentary aberration in history, the main focus of the lecture addresses the ways in which homophobia continued to find expression in the post-war criminalisation of homosexuality in both the former West and East Germany, and the failure to recognise more broadly across Europe the crimes perpetrated against gay and lesbian victims of Nazi atrocities. The postwar medicalisation of homosexuality, evident in the diagnostic history of homosexuality in the various editions of the Diagnostic and Statistical Manual of Mental Disorders (DSM), whereby homosexuality was pathologised initially as a sociopathic disturbance in DSM-I (1952), and then as a psychopathology in DSM-II (1968), aligned psychiatry and biomedicine with the social and cultural perpetuation of gender and sexual norms throughout the 1950s and 1960s. Even after the historic 1973 decision to remove homosexuality from the DSM, pathologisation continued with the entry of a new diagnostic category 'Gender Identity Disorder in Children' (DSM-III, 1980), which remained in the DSM until 2013 and is aimed at gender-atypical children and the fear of gay outcome, the traces of which remain in the current DSM-V in the revised diagnostic category 'Gender Dysphoria in Children.'

The lecture also examines medical and social discourses about homosexuality that repathologised it in the early days of the HIV/AIDS pandemic in the West whilst examining continued pathologisations and stigmas in the postcolonial and developing world around HIV/AIDS. The lecture concludes by addressing gender and sexual rights as human rights and addressing violent crimes that continue to be perpetuated against gender-atypical children, gay men, the transgendered, and lesbians in the present day, as well as the continued criminalisation of homosexuality in many parts of the world. By illuminating the ways in which homophobia intersects with other forms of domination and continues to shape contemporary society and culture, and by approaching historical sources on the Holocaust and National Socialism with new questions about sexuality and gender, we deepen the meaning of the Holocaust and help shape its ongoing significance.

MISSION STATEMENT OF ST ANDREW'S ON THE TERRACE

To create a lively, open Christian faith community,
to act for a just and peaceful world, and to be catalysts for discovery,
compassion and celebration in the capital.

MINISTRY AT ST ANDREW'S – THE TEAM

| | |
|--|---|
| Minister | Susan Jones |
| Parish Council Convenor | Sandra Kirby |
| Parish Council Clerk | Maxine Cunningham |
| Treasurer | Paul Barber |
| Facilities Management Group | Douglas Wood |
| Pastoral Convenors | Fiona McDougal, Brian Burrell, Linda Wilkins |
| Church Music Coordinator | Vivien Chiu |
| Theologian in Residence | Lloyd Geering |
| Presbytery Representative | Heather Macfarlane |
| Concert Coordinator | Marjan van Waardenberg |
| Rainbow Room Coordinator | Chris Carey-Smith |
| Church, Conference and Arts Manager | David Medland |
| Office Assistant | Karyn Bishop |
| Custodian, SATRS Administrator | Peter Cowley |
| Facilities Assistant | Rebecca Nodwell |
| Roster Coordinator | Rosemary Lawrence |

St Andrew's on The Terrace

www.standrews.org.nz

30 The Terrace – P O Box 5203, Wellington 6145

Office Hours: 9 am – 5 pm Monday to Friday

Phone (04) 472-9211

office@standrews.org.nz



Find us on
Facebook

Follow us on

twitter

Rev Dr Susan Jones

Office: (04) 472-9376. Home: (04) 909-9612. Cell: 027-321-4870

minister@standrews.org.nz

