

# St Andrew's on The Terrace

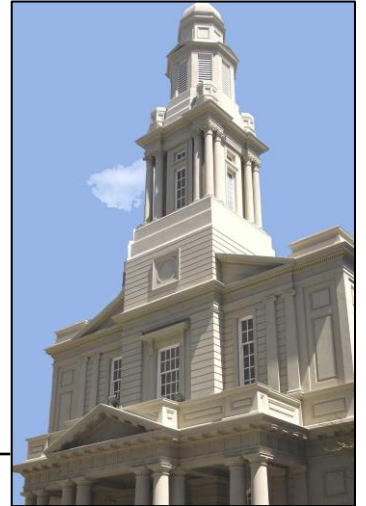
*Hato Anaru o Te Parehua*

Founded 1840

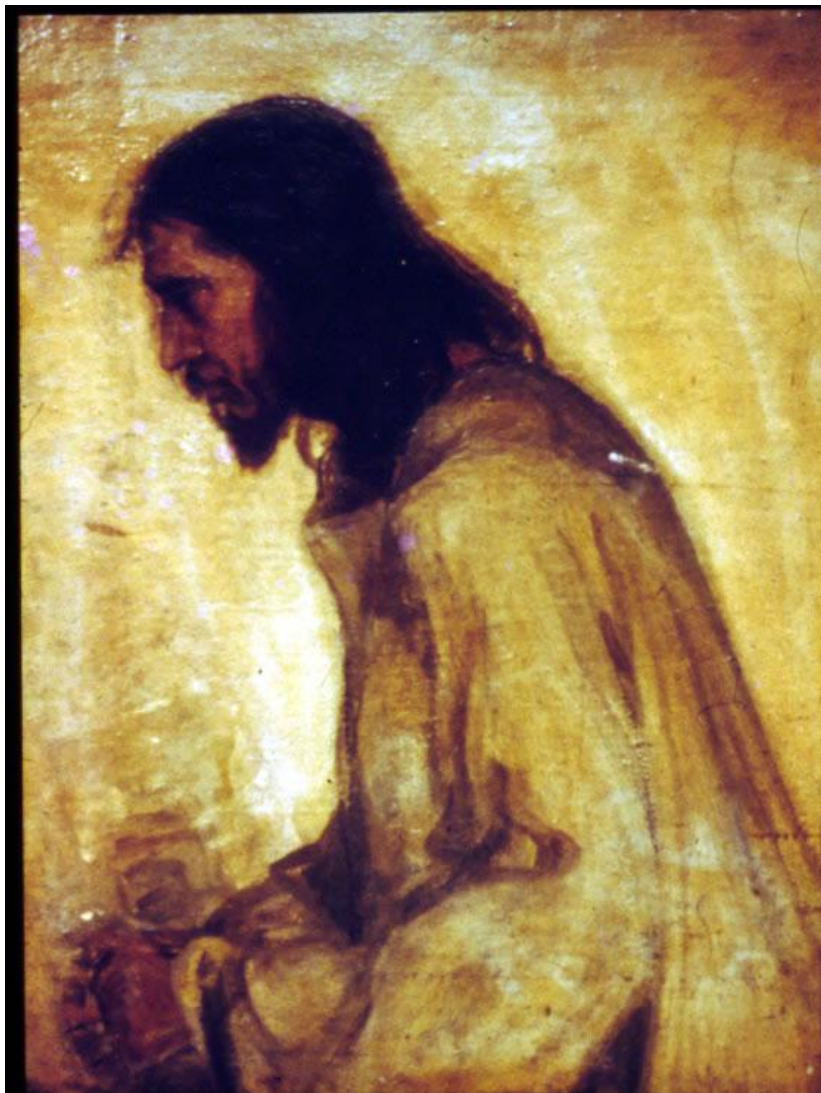
## ORDER OF SERVICE

3<sup>rd</sup> February 2013

---



## Fourth Sunday after Epiphany



*The Savior*

Henry Ossawa Tanner 1905

National Museum of American Art, Washington DC

## WELCOME TO ST ANDREW'S ON THE TERRACE

Wherever you are on your faith's journey,  
wherever you have come from and wherever you are going to,  
whatever you believe, whatever you do not believe, you are welcome here.

Please join in the congregational responses printed in ***bold italics***. Please stand if you are able, for the hymns and the offering prayer.

We will sing the hymns without announcement.

*Please note your nearest fire exit.*

*The church and hall have been earthquake strengthened.*

*In an earthquake: drop, cover and hold.*

During the building of the Welcome Centre, the only toilets available are upstairs in the Conference Centre. Access is via the external stairway at the back of the car park. We apologise for lack of disability access until July 2013.

### GATHERING

We gather here to celebrate life's beauty  
and find healing for its pain;  
to honour our kinship with each other and with the earth;  
to create a more compassionate world,  
beginning with ourselves.  
Let us celebrate life in the presence of God.

### PROCESSIONAL HYMN

Words: Bill Wallace

Music: Hymn to Joy. WOV 92

Land of shining primal forests,  
Sculptured ribbon framed by sea;  
Land of mystic snow-clad markers  
Charged with raw vitality;  
Valleys wreathed in mists of morning,  
Earth caressed by sparkling light,  
Gift of God, our awesome homeland,  
Signed with nature's cross by night.

Sing two races' different stories,  
Sing their hopes and sing their needs.  
Let the Treaty write our story,  
Frame our vows and shape our deeds.

Bid the people sit at table,  
share their joy and share their pain;  
Join in Covenant and banquet,  
break the bread and break the chains.

To the nation's patterned weaving  
we have brought our vibrant threads -  
Gifts of language, gifts of custom,  
Precious gifts of heart and head.  
Let us name our river, mountain,  
Make this soil our spirit's earth,  
Find the Christ in land and people,  
Bring God's tender dream to birth.

Dream our country's future pathway,  
Shape the journey day by day;  
Use the Treaty's founding wisdom  
Share the power and share the praise.  
Then beyond the present struggles,  
Festive joys and lurking fears,  
Nation-building based on justice  
Shall empower the people's prayers.

## **OPENING RESPONSES**

Empowering God, when the road ahead looms endless,

***empower us to be companions  
for one another along the road.***

Inspiring God, when the road forward is blocked,

***inspire in us creative responses  
that move us beyond the barriers.***

Enabling God, when the road before us divides,

***enable us to feel your presence luring us on.***

## **WELCOME**

E te whānau a Te Karaiti  
ngā mihi aroha ki a tātou katoa.  
***Kia ora tātou.***

## **PRAYER**

## **LORD'S PRAYER**

*on card*

## LIGHTING THE RAINBOW ROOM CANDLE

### TIME WITH THE CHILDREN

Jennifer Bush Daumec

*Rainbow Room will resume on Sunday 10 February. The service will include "blessing the backpacks." There are toys at the back of the church.*

### PASSING THE PEACE

#### WORD IN TEXTS

Jon Schrader

#### Hebrew Bible

**Jeremiah 4: 1-10**

*Call of the Prophet*

#### Gospel

**Luke 4: 21-30**

*Jesus rejected in his home town*

#### Contemporary Reading

"Reassurance"

Alice Walker

I must love the questions  
themselves  
as Rilke said  
like locked rooms  
full of treasure  
to which my blind  
and groping key  
does not yet fit.

and await the answers  
as unsealed  
letters  
mailed with dubious intent  
and written in a very foreign tongue.  
and in the hourly making  
of myself  
no thought of Time  
to force, to squeeze  
the space  
I grow into.

#### HYMN

Words and Music: Colin Gibson.

*In Faith forever singing*

These hills where the hawk flies lonely,  
beaches where the long surf rolls,  
mountains where the snows meet heaven,  
these are our care.  
Pastures where the sheep graze calmly,  
orchards where the apples grow,  
gardens where the roses cluster,  
these are our prayer.

Forests where the tree ferns tower,  
rivers running strong and clear,  
oceans where the great whales wander,  
these are our care.

Race meeting race as equals,  
justice for age-old wrong,  
worth for every man and woman,  
these are our prayer.

Cities where the young roam restless,  
lives brought to deep despair,  
homeless and powerless people,  
these are our care.

Places where the Word is spoken,  
hands held in serving love,  
faiths of our many cultures,  
these are our prayer.

All that the old world gave us,  
all that the new world brings,  
language, ideas, customs,  
these are our care.

Life finding joy and value,  
faith seeking truth and light,  
God heard and seen in all things,  
this be our prayer.

## **REFLECTION**

**Margaret Mayman**

*What's got in to that nice boy from Nazareth?*

## **LIFE IN THE COMMUNITY OF ST ANDREW'S**

*People share notices and visitors are welcomed. If you have a notice, please move to the front row, ready to speak briefly from the lectern.*

## **OFFERING PRAYER**

***In gratitude for the blessings of our lives  
we bring what we have to offer.  
May our gifts bring hope to others,  
in this act, and in our commitment  
to cherish and honour all of life. Amen.***

*We recognise and bless the gifts brought to the table and those given to support the mission of the church through automatic payment.*

## **PRAYERS OF THE PEOPLE**

**Colma Froggatt**

### **PRAYER FOR ST ANDREW'S**

*on card*

## **INVITATION TO COMMUNION**

St Andrew's is an open community and all are invited to Christ's table.  
Wherever you are on your faith's journey, wherever you have come from and wherever you are going to, whatever you believe, whatever you do not believe, you are welcome to participate in the communion.  
This meal is for all people.

Communion is served by intinction. Come to the front of the church and receive the bread, or a gluten-free cracker, taking a piece large enough to dip into the wine (silver cup) or grape juice (pottery cup).  
Eat the bread dipped in wine or juice.

If you don't wish to receive communion, you may remain in your seat or you are welcome to come forward to receive a blessing.

## **COMMUNION LITURGY**

*on card*

## **SHARING BREAD AND WINE**

We share with each other: The bread of life; The cup of blessing.

## **HYMN**

*Spirit of Gentleness*

Words and music: Jim Manley

*Spirit, spirit of gentleness,  
blow through the wilderness,  
calling and free -  
Spirit, Spirit of restlessness,  
stir me from placidness, wind, wind on the sea.*

You moved on the waters, You called to the deep,  
Then you coaxed up the mountains from the valleys of sleep;  
And over the eons you called to each thing  
...Wake from your slumbers and rise on your wings

You swept through the desert, You stung with the sand,  
And you goaded your people with a law and a land;  
And when they were blinded with their idols and lies,  
Then you spoke through your prophets to open their eyes.

You sang in a stable, You cried from a hill,  
Then you whispered in silence, When the whole world was still;  
And down in the city, You called once again,  
When you blew through your people on the rush of the wind.

You call from tomorrow, You break ancient schemes.  
From the bondage of sorrow, The captives dream dreams;  
Our women see visions, Our men clear their eyes.  
With bold new decisions, your people arise.

### **BENEDICTION AND SUNG AMEN**

May the love that gives to life its beauty,  
the reverence that gives to life its sacredness,  
and the purposes that give to life its deep significance  
be strong within each of us  
and lead us into ever deepening relationships with all of life.

*Thanks to Peter Franklin, our organist this morning.*

-----

*There is a 2-hour parking limit on the street in the Wellington CBD on Sundays. If you are staying for an after-church activity, you might like to move your car into the car park, or move to a new space on the street.*

**We welcome all visitors  
and invite you to stay for morning tea or coffee.**

Please sign the visitors' book at the back of the church.

We hope you enjoyed worshipping with us.

At St Andrew's we want you to feel at home—to join in with the activities of our community of faith, or to come and find your own spiritual place in your own time. If you would like more information about St Andrew's or to explore becoming a member or associate member, please fill in a "Belonging" form (at the back of the church) and hand it to a minister or a welcoming team member.

Thanks to this week's volunteers	
Welcoming:	Tony & Sandra Kirby
Sound:	Frank Cook
Offering:	Graham Howell, tbc
Coffee/tea:	Peter Cowley, Sonia Petrie, Dick Keller
Communion:	Colma Froggatt, Fiona McDougal, tbc

On duty Sunday 10 Feb	To be advised
Welcoming:	
Sound:	
Offering:	
Coffee/tea:	
Time with the Children:	
Readings:	
Prayers of the People:	
Musician:	

This Week and Coming Events at St Andrew's		
Sun 3 Feb	10 am 11.30 am	Sunday gathering led by Margaret Parish Brunch
Sun 10 Feb	10 am	Sunday gathering led by Margaret

### WEST PAPUA PEACE DAY.

You are invited to light a candle for peace in West Papua. Come any time between 12:15 and 1:00pm on Tuesday 5 February at St Andrew's on the Terrace. Some short prayers will be read at 12:30.

### LENT CONTEMPLATIONS

A small group will be meeting to discuss a theme and put together the *Lent Contemplations* this year. If you'd like to be part of that group and contribute in any way however small, please talk to Fiona, or email [fionaredsquirrel@gmail.com](mailto:fionaredsquirrel@gmail.com)

### MORNING TEA/COFFEE

If you are on the roster for tea/coffee, you will be sent the door codes to the hall via email. The filled water urns can be brought through the south vestry into the church.

### ITEMS FOR DCM FOODBANK IN FEBRUARY 2013:

Instant Coffee; Milo; Washing powder; Noodles; Cereals (other than Weetbix); Spreads (Jam, Honey, Marmalade, Vegemite, Peanut butter); Tinned fish; Pasta sauces; and Single serve meals. Also, toiletries – hair shampoo, tooth brushes & tooth paste and toilet rolls. Thank you for your support.



## **INSTITUTE FOR GOVERNANCE AND POLICY STUDIES early February events**

### **Euthanasia and assisted-suicide: balancing the duty of care, the duty to sustain life, and the rights of the patient**

Speaker: Dr Graeme McLean (Philosophy Programme, Charles Sturt University)

- Date: Thursday 7 February 2013
- Time: 7.00pm - 8.30pm
- Venue: Government Buildings, Lecture Theatre 1 (Access via Stout Street)

*About Dr McLean:*

*Dr Graeme McLean is Senior Lecturer and Philosophy Co-ordinator at Charles Sturt University, Wagga Wagga, Australia. He comes originally from Melbourne. He studied at Monash University (BA (Hons) and MA) and the University of Oxford (BPhil and DPhil). He was a visiting assistant professor at Regent College, Vancouver, in 1988, and from 1990 to 2004 a member of the Philosophy Department of the University of the Witwatersrand, Johannesburg. In 1997 Dr McLean received the Vice-Chancellor's Teaching Award at the University of Witwatersrand, and in 2008 was awarded the Vice-Chancellor's Award for Teaching Excellence at Charles Sturt University. His main philosophical interests are in the theory of knowledge, applied ethics, and philosophy of religion.*

### **Dividing the climate burden justly**

Speaker: Ewan Kingston

- Date: Friday 8 February 2013
- Time: 12.30pm-1.30pm
- Venue: Railway West Wing, Room 501 (Level 5)

Climate change presents humanity with a burden. Ewan will present a plausible account, inspired by Simon Caney, of what justice requires in the allocation of this burden. He will then defend the theory against objections, and consider how it could be applied.

*About Ewan Kingston:*

*Ewan Kingston has just completed his MA thesis in Philosophy titled "The Just Allocation of Climate Burdens". He has recently worked for Oxfam NZ as a policy and research intern, focussing on climate change, and has written for the Ecologist on various environmental issues.*

### **SAVING ST ANDREW'S FUNDRAISING OPPORTUNITY**

Currently we have tea towels supplied and washed by a local towel company.

There is a cost for this service which totals \$743.60 each year.

If you would like to be involved in fundraising and can't think of a project, then how about this?

Someone would need to take responsibility for this job and perhaps get 3 others to help so that you needed to take the tea towels home, wash and return once a week.

If you are interested, please let David in the office know.

# **Lent Contemplations**

**St Andrew's on The Terrace**



**“Journeying with passion”**

A series of 6 short contemplative  
services

**Wednesdays at 5.30pm**

beginning 13<sup>th</sup> February and ending

Wednesday, 20<sup>th</sup> March

ALL WELCOME



**Friday 15 February 2013 • 6.30pm to 8.30pm**

**A conversation between Lloyd Geering and Buddhist teacher  
Winton Higgins at St Andrew's on The Terrace**

## Is secular religion a contradiction in terms?



*Sir Lloyd Geering (left) and Winton Higgins*

The idea that secularity is the scourge of religion drives high-volume book sales by militant and not-so-militant atheists such as Christopher Hitchens, Richard Dawkins and Alain de Botton.

However, Christian commentators on secularity such as Charles Taylor, Gianni Vattimo and Lloyd Geering have a more insightful and suggestive tale to tell, and Buddhists such as Stephen Batchelor and Winton Higgins are attempting to align the Buddha's teaching with the intensifying secularity in today's western culture and thought.

Are current accounts of Buddhist and Christian secularity pointing to the seeds of secularity having been planted in these traditions, and can this give a new lease of life to both religions in late-modern conditions? Winton Higgins and Lloyd Geering will be discussing ideas such as this, and more.

**No charge for admission – we welcome a donation / koha / dana**

[www.satrs.org.nz](http://www.satrs.org.nz)  
[admin@satrs.org.nz](mailto:admin@satrs.org.nz)



04 472 9212  
022 610 2910

## MISSION STATEMENT OF ST ANDREW'S ON THE TERRACE

To create a lively, open Christian faith community,  
to act for a just and peaceful world, and to be catalysts for discovery,  
compassion and celebration in the capital.

### MINISTRY AT ST ANDREW'S – THE TEAM

<b>Senior Minister</b>	Margaret Mayman
<b>Parish Council Convenor</b>	Sonia Petrie
<b>Parish Council Clerk</b>	Maxine Cunningham
<b>Treasurer</b>	Paul Barber
<b>Saving St Andrew's Convenor</b>	Lynne Dovey
<b>Pastoral Convenors</b>	Colma Froggatt, Fiona McDougal
<b>Music Coordinator</b>	Jane Keller
<b>Theologian in Residence</b>	Lloyd Geering
<b>Presbytery Commissioner</b>	
<b>Concert Coordinator</b>	Marjan van Waardenberg
<b>Rainbow Room Coordinator</b>	Monika Demuth-Barber
<b>Parish Manager</b>	David Medland
<b>Custodian</b>	Peter Cowley

## St Andrew's on The Terrace

[www.standrews.org.nz](http://www.standrews.org.nz)

30 The Terrace – P O Box 5203, Wellington 6145

Office Hours: 9 am – 5 pm Monday to Friday

Phone (04) 472-9211

[office@standrews.org.nz](mailto:office@standrews.org.nz)

**Rev Dr Margaret Mayman**

Office: (04) 472-9376 Home: (04) 972-6461 Mobile: 027-226-4608

[minister@standrews.org.nz](mailto:minister@standrews.org.nz)

